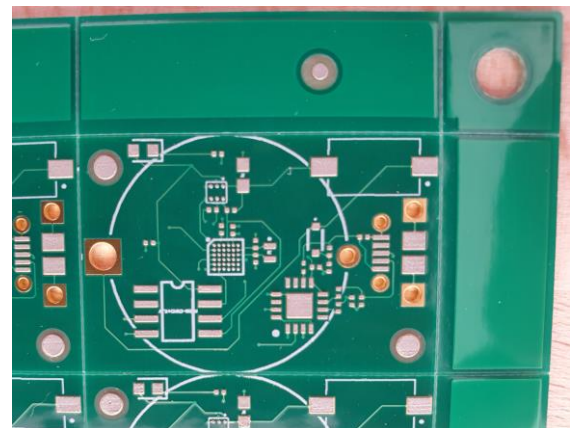


Stencil printer S1



• Screen and Stencil printer S1

- **Technical data**
- **Stencil size**
- max. 395 x 280 mm
- min. ca. 100 x 100 mm
- Adaptable rapid tensioning system - 2 side
- Stencil is variable in length and width
- **PCB size**
- max. 350 x 250 mm
- **Printing area**
- max. 300 x 240 mm
- **Squeegee**
- Manual – metal blade
- **Printing**
- Single or double-sided PCB
- **Off-Contact (Z -axis) Range**
- 0 – 22 mm
- **Table - X, Y / Theta Adjustment**
- +/- 7 mm / +/- 2°
- **Adjustment accuracy**
- +/- 0,01 mm
- **Dimensions and weight**
- 530 x 370 x 130 mm / 20 kg
- **Application area**
- prototypes or low volume production
- Screen or stencil printing of glue, solder paste or another substances
- minimum pitch of pads 0,4mm



printing results for μ BGA and 0201